



Interreg



UNION EUROPÉENNE
UNIONE EUROPEA



MARITTIMO-IT FR-MARITIME

Fonds européen de développement régional
Fondo Europeo di Sviluppo Regionale

NEPTUNE blue trails

The DONATOR, The Prosper Schiaffino



**Warning
FRAGILE**



Diving



**Cultural and
natural**



**High
frequentation**

Geographic location

France, Région Sud, Hyères les Palmiers

Name of the conservation area (or protected area)

Marine area adjacent to Port-Cros National Park

Level of environmental protection

Natura 2000 Hyères bay

Name of the dive site

The Donator, the Prosper Schiaffino

Geographic coordinates (reference system)

LAT	N 42°59'592"
LONG	E 06°16'436"
Reference system	EPSG-4326 - WGS 84 system



LOCATION



Access to the dive site by boat, equipped site (buoy)

Site characteristics

Maximum depth

35 - 52 metres

Difficulty

**current can be extreme, numerous users
(snorkelling, fishing)**



Cultural and natural

Information about the managing body

Port-Cros National Park manages the adjacent marine area and the Hyeres bay Natura 2000 zone. It conducts the concertation between professional divers and fishermen, the municipalities, government bodies, etc., to define the actions and protective measures to carry out.



INFORMATION



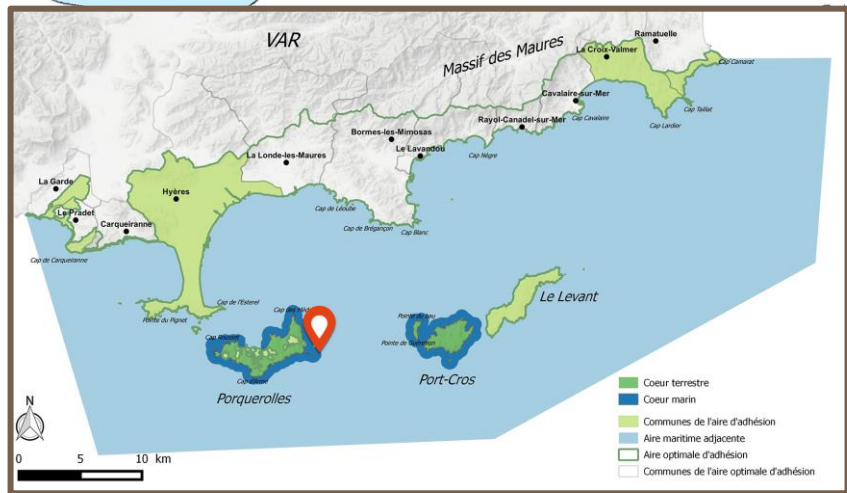
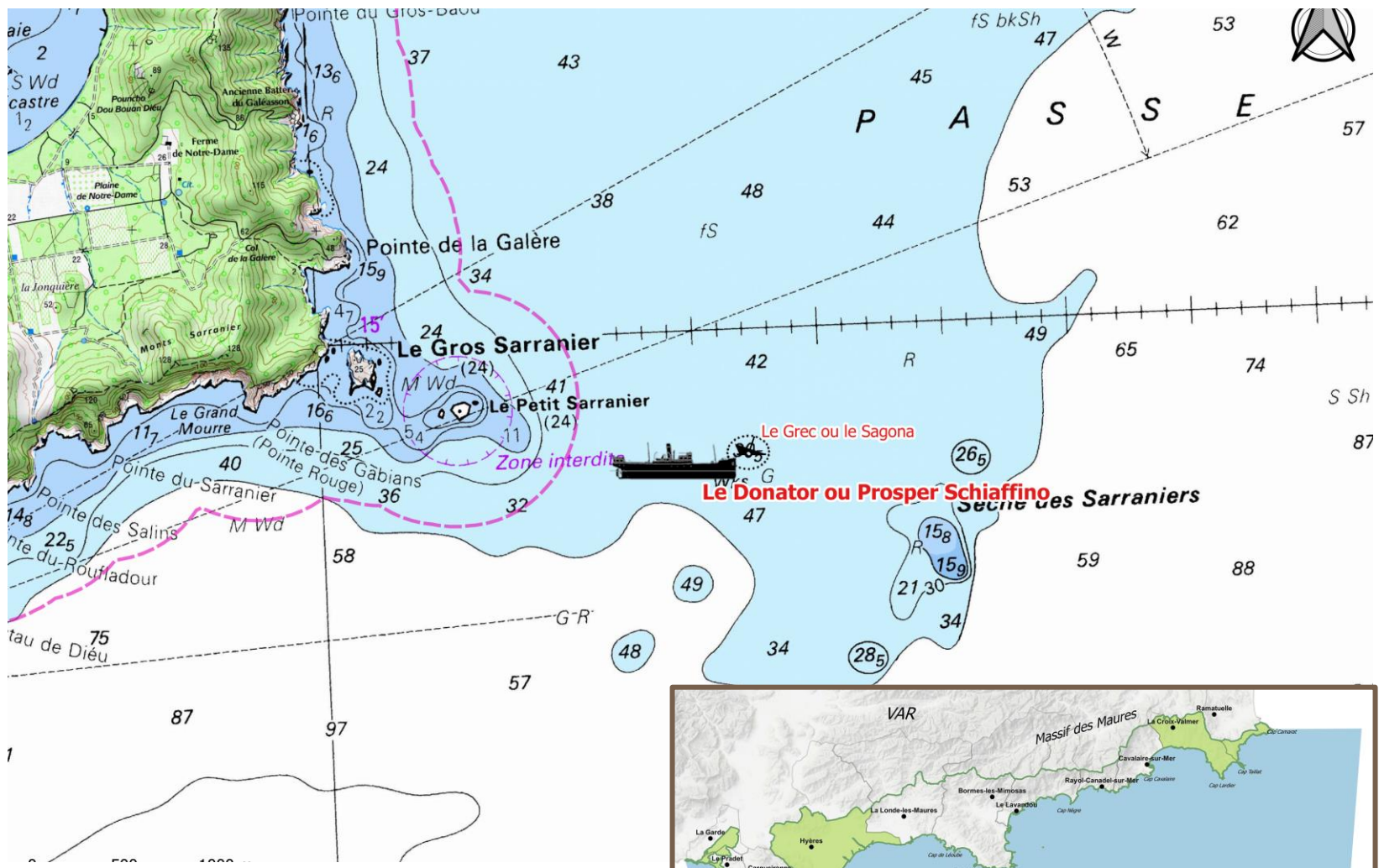
Diving



Permit not required

WARNING

Due to the presence of fishing lines, nets, sharp metal parts, and fragile structures that can break without warning, wrecks can be dangerous for divers. Entering a wreck requires skill and specific training and equipment as well as the respect of safety rules.



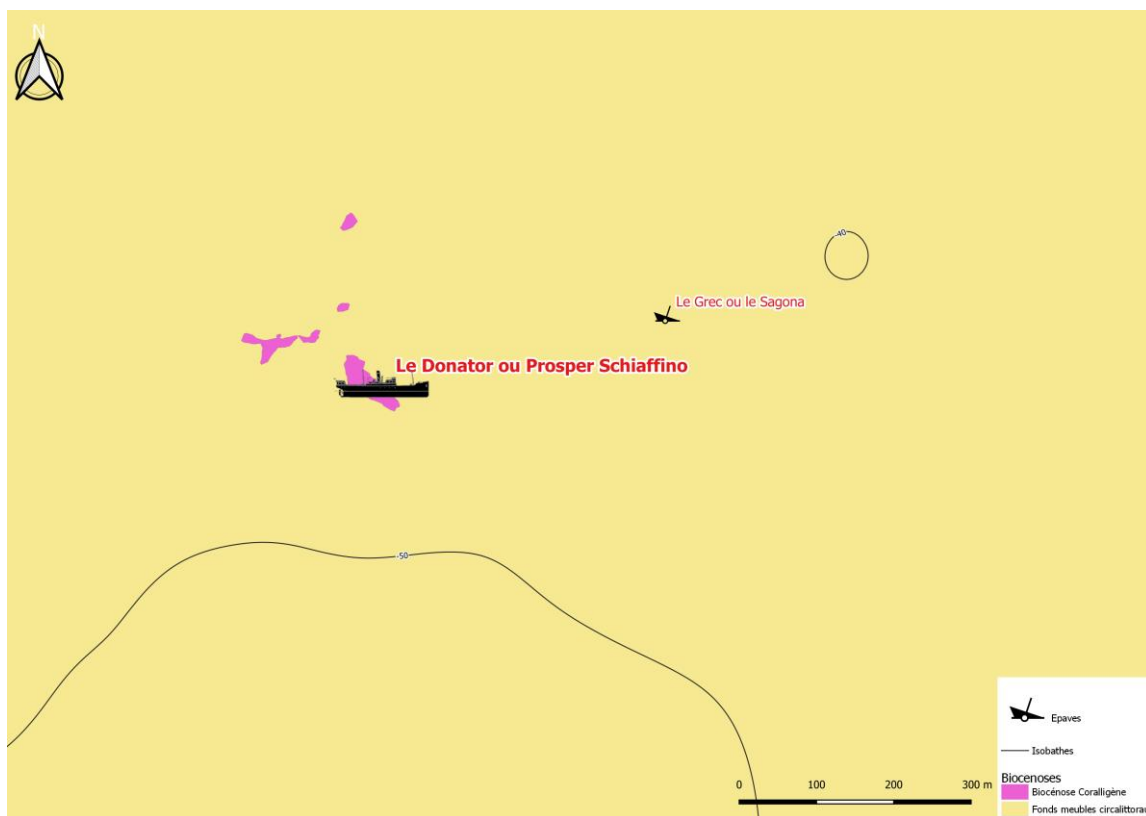
MAP



Warning FRAGILE

Description of the site of natural interest

The wreck is positioned vertically on a sandy seabed. It is covered with red sea fans (*Paramuricea clavata*) and teems with life: dentex (*Dentex dentex*), grouper (*Epinephelus marginatus*), striped red mullet (*Mullus surmuletus*), two-banded sea bream (*Diplodus vulgaris*) and schools of swallowtail sea perch (*Anthias anthias*), etc.



NATURAL

Area of the main habitats (within a radius of 100 m around the site):

- **Coralligenous biocenosis**
- **Unconsolidated bottom in the circalittoral zone**

To protect biodiversity

- Avoid touching underwater flora and fauna
- Do not chase fish
- Do not feed them
- Do not bring anything to the surface
- Beware of uncontrolled flipper movements, check your floatation gear
- Check that your emergency regulator is properly attached to your BCD jacket and in no case allow your equipment to trail behind you as it risks getting caught on flora and fauna.



The DONATOR - School of common two-banded sea bream (*Diplodus vulgaris*)

© Nicolas BARRAQUE - DSC_1807



The DONATOR - Red scorpionfish (*Scorpaena scrofa*)

© Dominique BARRAY



The DONATOR - School of swallowtail sea perch (*Anthias anthias*)

© Nicolas BARRAQUE - DSC_1708



Dusky grouper (*Epinephelus marginatus*) and flora and fauna ambiance © Dominique BARRAY

List of main species

- **Swallowtail sea perch** (*Anthias anthias*)
- **Red scorpionfish** (*Scorpaena scrofa*)
- **Dentex** (*Dentex dentex*)
- **Gilt-head bream** (*Sparus aurata*)
- **Red sea fan** (*Paramuricea clavata*)
- **Dusky grouper** (*Epinephelus marginatus*)
- **Striped red mullet** (*Mullus surmuletus*)
- **Two-banded sea bream** (*Diplodus vulgaris*)

Description of the site of cultural interest

The Donator was built in Bergen, Norway, in 1931. It was 78 metres in length with a beam of 12 metres. It was a fast vessel whose 1800 hp engine could propel it at 14 knots. The Schiaffino company renamed it the Prosper Schiaffino and it served to transport wine. During the Second World War, the Prosper Schiaffino was a merchant vessel that also transported troops and equipment between Algeria and the zones that were gradually liberated. In 1945, it was one of the few surviving vessels in the French merchant fleet.

The wreck:

On 10 November 1945, the Prosper Schiaffino returned from Algeria where it had delivered dried vegetables and potatoes and was returning with a cargo of wine. After a stormy crossing, the Prosper Schiaffino was assailed by the Mistral. It was decided to pass Porquerolles by the south to shelter from the wind. However, it struck a mine near the small islets of Grand and Petit Sarranier. The vessel sank within 4 minutes. A few weeks later, the Sagona suffered the same fate in practically the same place.



Illustration The Donator © Jean-Pierre JONCHERAY



The ship's bell of the Donator, its original name
Collection Jean-Pierre Joncheray

CULTURAL

The DONATOR - Ambiance on deck
© Dominique BARRAY

The DONATOR - The remains of the
mast © Nicolas BARRAQUE

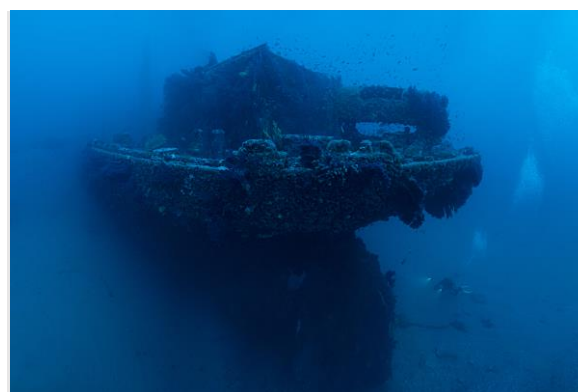
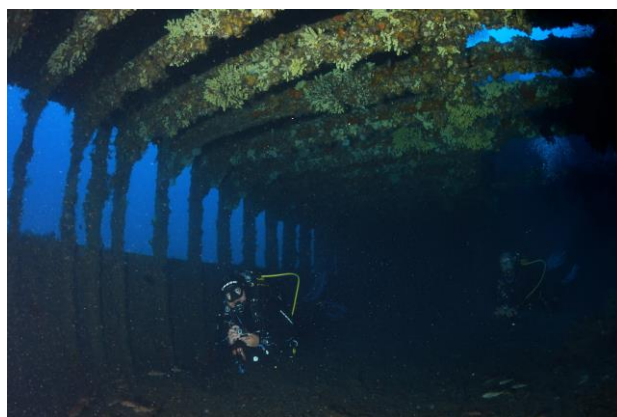
The DONATOR - The helm
© Nicolas BARRAQUE



Photos of underwater cultural heritage

WARNING

Wrecks and all traces of underwater cultural heritage are protected by law. It is prohibited to bring anything to the surface.



The DONATOR - Ambiance at the stern
© Dominique BARRAY

The DONATOR - The forward cargo hold
© Nicolas BARRAQUE